



BAYOU BYLINE

Bayou Chapter, Ozark Society
May 2013



Centenary College Campus Map



Our monthly meetings are held at Mickle Hall in the Carlisle Auditorium on Centenary College campus on the first floor.

X marks the spot on the map.

Meetings are held on the third Tuesday of each month. (except December) Program starts at 6:30 pm. Business meeting follows.

Plan to join us after the meeting for pizza and socializing.

May Meeting

Tuesday, May 21, 2013 at 6:30 pm

Carlisle Auditorium, Mickle Hall, Centenary College

Got ideas for BCOS Programs? Let us know.

Some of our best programs have resulted from members suggestions.
Contact Bill Robertson, Vice-Chairman Program/Outings Coordinator.

318-861-1932 wgrobertson@gmail.com

“Like” us on Facebook! www.facebook.com/bayouozark

Check out our website www.bayouozark.com!

We are culling the membership list and you will be deleted from the yahoo groups list if you have not renewed your membership. Please send it now!

BCOS Planning calendar

More details will be posted on the BCOS yahoo groups list and on the BCOS Facebook page as the events approach. www.facebook.com/bayouozark

May:

May 18 - Red River Wildlife Refuge - help kids into boats. Volunteers and boats needed; includes lunch either 8:00 - 12:00 or 9:00 - 1:00. Organized by Jon Soul, 318-869-4798.

May 22 - Red River Paddle. 6:00pm. Put-in across from Sci-Port. Take out at Stoner Boat Launch. Contact Joe Goodwin 318-347-9600 joseph.goodwin@manitowoc.com.

May 31 - June 2 - ACC Recreational Paddling school - Spring River

June:

June 1st – Dorcheat paddle at Ted Riser’s, 102 Tom Crichton Rd, Sibley, LA – meet at 5pm for an evening paddle. Phone 318-465-0390.

July:

July 7-13 - Colorado Trip High Adventure Trip. Cascade Campground in the San Isabel National Forest. Contact Bob Ritchie at 501-225-1795.

August:

August 4 - Rivercities Triathlon at Cypress Black Bayou. 8-11am.
<http://www.sportspectrumusa.com/events/rivercities-triathlon/>

September:

Sun, September 22 - Meat Pie Triathlon in Natchitoches, LA.
<http://www.sportspectrumusa.com/events/meat-pie-triathlon/>

October:

11,12,13 - Fall All Society Meeting. BCOS will host at Lake Claiborne State Park. Make your reservations now at <http://www.crt.state.la.us/parks/ilakeclai.aspx> or call 1-877-226-7652.

Coming this Spring - Canoe/Kayak Clinic in Arkansas

Adam Willard - 423-1690 ashleysbuilding@suddenlink.net

Joe Goodwin - 347-9600 jgoodwin@frymaster.com

TBA - Canoe/Kayak repair day with Jerry Martin. Cathy Joyce and Sandy Roerig are organizing it.



Bayou Chapter Ozark Society April 16, 2013 Minutes

By: Cathy Joyce

Harvey Kennedy called the meeting to order at 7:30, after a presentation by Ted Riser on the L&A Trail.

Harvey introduced our guests: Jack Lamb, Kathy Williamson and Tom Bowman.

Secretary's report

Motion moved and carried to accept minutes of the February meeting as posted in the last newsletter.

Treasurer's report

Sharol Davenport: \$5,488.29 balance; \$4,242.19 is operations money, and \$1,941.10 in the instructor Development fund.

Publicity

Harvey said that tonight's meeting with Ted Riser as speaker was sent to the newspaper.

Conservation

Dick Maxwell: Assumption Parish sinkhole is as big as the Super Dome now. Work on it had to be stopped because of (earthquake) tremors.

Cross Lake is silting at about ½" a year. So, in several years, we could not have a Cross Lake any more. It appears that nobody does anything until the situation is really critical. The lake was supposed to be dredged several years ago, but it was too expensive. Now if it isn't done, the cost will be even higher. But...if it was dredged, what would be done with all the silt?!

OLD BUSINESS

There are still some BCOS shirts for sale. See Jenny Hackman.

PAST OUTINGS

All Society meeting

- Lots of talk about hogs.
- The Butterfield Mail Route - OS is trying to get it re-established as a historical trail.
- Our members hiked a brand new trail that's only flagged now. It merges into the Ozark Highland Trail.
- Student Membership was voted in for \$5.00. But students have to receive everything via email.
- The **duck box** completion on Dorcheat Bayou was highlighted in the Minden paper.
- **Monkey Trail** hike report was given.

UPCOMING OUTINGS

April 20

Caddo Lake Paddle Trail - Information will be posted on BCOS and face book. There are three trails, each four miles. Cost of \$10 per boat, plus launch fee. There will be boxes throughout the trails to put tickets for door prizes.

April 20

Jenny & Gary Hackman are participating in an Orienteering meet at Bodcau. They will post information on BCOS for those interested in participating.

May 3-5

ACC Whitewater Clinic

May 10-22

Louisiana Boardwalk - Water Resource Festival. Gary Hackman will attend a meeting on this April 17, and will report on BCOS with more information and asking for volunteers.

May 18

Red River Wildlife Refuge - Kathy Williamson reported that Jon Soul needs volunteers to help get kids into boats. He needs help for about four hours, which will include lunch for volunteers. They also need us to bring tandem canoes.

Fall

All Society Meeting - BCOS is hosting. Lake Claiborne State Park. We have to reserve campsites. We will have an Orienteering course, a blacksmith demonstration, paddling Dorcheat (to see those duck boxes!).

NEW BUSINESS

May 5

Crawfish "boil" - at Jack & Marsha Land's Sugar Creek place. More info coming on BCOS from Kenny Miller.

May 31 - June 2

ACC Recreational Paddling School. Registration is now open. Check for information on the ACC website.

Reminder - BCOS has Business memberships available for \$100/year.

We are open for suggestions for outings.

Meeting adjourned at 8:15.

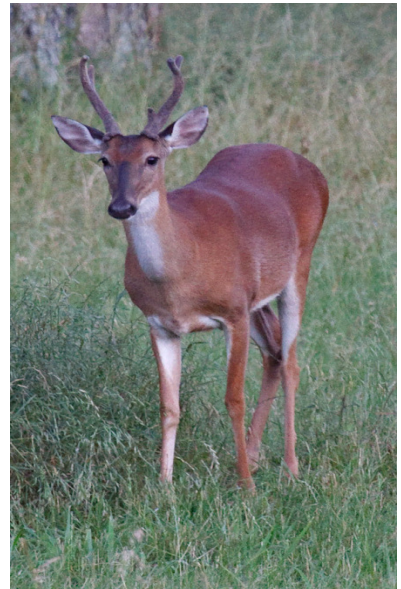




Eagle photos by Ronnie Basham



Plan to attend the June 1 paddle at Ted Riser's house and maybe you can see the eagles and their nest in person.



This was taken from Ted Riser's front porch.

Bayou to Bay Update

We have reached the Gulf.

For photos and details please go to <http://thebayoupierrewatershedproject.shutterfly.com/>

Now please help us reach our goal!

From the beginning this project has been about **experiential education** -- the idea that moving information from abstract to concrete (and head to heart) often requires direct contact. On Saturday, May 18, the participating schools within the Bayou Pierre watershed are invited to join us for a "Play Day" at the Red River Wildlife Refuge Headquarters in order to complete their "training" as Louisiana Watershed Protectors.

To volunteer, help provide boats and equipment, or contribute financially, please contact Jon Soul at jonksoul@gmail.com or 572-4080. Together we can provide an experience that will directly benefit our waterways long term. Thank you!



The poster features a green map of Louisiana with a blue river winding through it. A banner across the top reads "BAYOU TO BAY" with a globe icon. To the right of the map, the text "LOUISIANA WATERSHED PROTECTOR" is written in orange. Below the map are three orange stars. The main event title "PLAY DAY" is in large, bold, black letters, followed by "Saturday, May 18, 9 a.m. - 1 p.m." in orange and "Red River National Wildlife Refuge" in black. A box at the bottom contains the text: "Attention BAYOU TO BAY students and families: Activities to include fishing, water quality testing, canoeing, visitor center tour, river clean-up, and more! Please remember to wear your play clothes, shoes to get wet, sunscreen, and bug spray. Snacks, lunch, water, and life jackets will be provided." At the bottom are logos for Caddo Parish Public Schools, Friends of Red River, Redhead, River City Cycling, and SciPort Louisiana's Science Center with a Facebook icon and the website www.sciport.org.

BAYOU TO BAY

LOUISIANA WATERSHED PROTECTOR

PLAY DAY
Saturday, May 18, 9 a.m. - 1 p.m.
Red River National Wildlife Refuge

Attention BAYOU TO BAY students and families:

Activities to include fishing, water quality testing, canoeing, visitor center tour, river clean-up, and more! Please remember to wear your play clothes, shoes to get wet, sunscreen, and bug spray. Snacks, lunch, water, and life jackets will be provided.

caddo parish public schools
FRIENDS OF RED RIVER
REDFEED
RIVER CITY cycling
SciPort
LOUISIANA'S Science Center
www.sciport.org

Caddo Lake Earth Day Regatta

By: Terry Harlon

It was a beautiful day for paddling on Caddo lake . A guy from Marshall, TX named Cody joined up with our group for the day of paddling. I didn't notice any trash on the water! Everyone is doing a great job of not littering and picking up.

Dianne Jones, one of the Earth Day organizers led a few of us through the "government ditch" route and it was very beautiful. The ceremony at the end of the event was fun and informative with lots of us winning prizes from the drawing. I was lucky enough to win a nice framed photo of an area displaying boat road "C" sign.

Click here to see Longview newspaper photo of BCOS members Dick and Harvey.

http://www.news-journal.com/news/local/cities-counties-join-fight-for-environmental-initiatives/article_3986b909-7fb9-52c7-84aa-ab8072efe0a6.html



Left to right: Jerry Bertrand, Toby Morvan, Bill Robertson, Toni Spitale, Harvey Kennedy, Terry Harlon, Dick Maxwell and Sandy Roerig.



Spring All-Society Meeting

By: Sandy Roerig

Four BCOS members (Jenny and Gary Hackman, Roy O'Neal and Sandy Roerig) attended the Ozark Society Spring All-Society Meeting at Lake Fort Smith, AR, on April 13. Jenny is the newly elected Membership Chair of the Ozark Society. Roy O'Neal, the newly elected Louisiana State Director, Gary served as the proxy for Harvey Kennedy (Chair of the Bayou Chapter) and Sandy Roerig is the Recording Secretary.

After a delicious breakfast prepared by members of the host Highlands Chapter, Terry Fredrick, Chair of the Highland Chapter welcomed the attendees and described the activities for the day.

The main issue of discussion was the hog farm issue. In Aug/Sept 2012, the Arkansas Department of Environmental Quality (ADEQ) issued a permit to a farmer for a 6,500 hog operation on about 640 acres in northern Arkansas. Waste from the farm will be sprayed or injected onto 11 waste areas that are adjacent to Big Creek. Of great concern to the Ozark Society is that Big Creek drains directly into the Buffalo River. The potential to contaminate the river is high. In addition, there is a public high school track about 300 feet from the 2 already constructed barns and waste holding ponds. The operation is west of the school, allowing prevailing winds to distribute odors directly to the school.

It appears that several key policies were not correctly followed during the approval process for the operation. (1) there was inadequate public notice (2) the Buffalo National River Park Service was not notified, and did not find out about it until December (3) the Farm Service Agency (FSA), that approved the loan for the operation, apparently performed an environmental assessment, but failed to notify the Buffalo National River Park Service and did not follow their own regulations.

Many members expressed concern about the project, but were uncertain if there is anything that can be done. Apparently, the first hogs have already been delivered to the site. The possibility of a lawsuit to halt the operation was discussed but no decision was made.

President Bob Cross gave an updated report on the lawsuit to obtain an environmental impact study on the horizontal fracturing operation in the Ozark National Forest. No drilling has occurred so far in this area. We are now waiting for a ruling from a judge about obtaining additional information.

Jenny announced that she will try to attend meetings of various chapters to discuss ideas about promoting membership.

There are still a few openings for the Colorado Trip to be held in early July.

Laura Timby discussed the Recreation Emphasis Program that was initiated at the January Winter Board meeting. The Ozark Society is planning to promote more recreational events, such as the Colorado Trip. Laura asked that people who would like to be trip leaders should contact her.

Jenny announced that the Fall All-Society Meeting will be hosted by the Bayou Chapter on October 11-13 at Lake Clairbone, LA. More details will follow in the *Pack and Paddle*.

Laura announced that Ken Smith still needs volunteers for the last week of spring trail building on the Buffalo National River Trail. The Highlands Chapter has been very helpful so far in this effort.

After the General Meeting was adjourned, there was a short lunch break, then a meeting of the Ozark Society Board was held. Charline Manning stated that so far there have been no volunteers to lead the Buffalo River Trip this year. There was more discussion on the hog farm issue. It was decided to continue the discussions by e-mail.

The afternoon sessions included a short film by Joe Hamilton, Lake Fort Smith State Park Interpreter on the history of the park. John McLarty of Heritage Trail Partners provided a very interesting talk on the Butterfield Overland Stage Route, that carried mail before the pony express. Stewart Noland then discussed some history of Lee Creek.

Following the meetings, there was a tour of Lake Fort Smith on a pontoon boat, hosted by Joe Hamilton. It was a beautiful day and we were happy to get out on the water. The lake is the city water supply, so no swimming, water skis or jet skis are allowed, but we did see a few kayakers on the water.

Following the, as usual, amazing pot luck dinner, we were serenaded by cowboy Marshall Mitchell who sang some classic cowboy songs as well as his own compositions. After that, we enjoyed sarsaparilla and conversation by the fireplace on the lodge porch.

On Sunday morning, Gary, Jenny, Jerry Dorman (Highlands Chapter) and I followed Joe Hamilton on a new, as yet unbuilt trail in the park. We followed Joe and the flags on the trees and were treated to some amazing views of the lake, spring flowers (trillium, May apples, spring beauties, Jack-in-the-pulpit, etc), and some fun bushwhacking. This new trail is the Shepherd Spring Loop that connects to the Ozark Highlands Trail. We returned to the visitor's center on the OHT, for about a 5 mile hike.

Several other Ozarkers joined Stewart for a paddle on Lee Creek and others hiked a couple of miles on the OHT.

Overall, it was another productive interaction among Ozark Society members. Lake Fort Smith State Park has excellent accommodations and beautiful scenery. I hope to see lots of Bayou Chapter members at the Fall Meeting – we'll show the group a Louisiana good time!

Those of you who are not on the BCOS yahoo groups are missing out!

Some outings are last minute and only announced on the yahoo groups list along with business discussions and other interesting topics.

Yahoo groups instructions for being added:

Go to <http://groups.yahoo.com/group/bcos/>

1. Click on "Join this Group"
2. Sign in to Yahoo with your user name and password. You can also sign in with Google or Facebook.
3. You will then be taken to a page with a few options...
4. Double check your contact information (Yahoo profile and email address)
5. Write a note to the group owner (Brenda Miller) about yourself and why you would like to join the group.
6. Message Delivery – Check if you want individual or daily emails from the group.
7. Click on your message preference and enter in the captcha code.
8. Then click on "Join" at the bottom of the page.
9. Now your membership is pending. You will receive a confirmation email when your membership has been approved.

Crawfish Boil

By: Jack Land

The good times kept rolling at our annual crawfish boil. We actually don't boil them anymore so that gives us more time to enjoy socializing and eating them bugs.

The weather was amazing and Kenny and Sandy did a fantastic job of orchestrating the boil from start to finish. Kenny furnished Jeep rides all over the Sugar Creek property (even roads I did not know a vehicle could navigate) and Marsha gave guided hikes. Sandy Roerig and Marsha did a little fishing and caught some enormous Bream out of the pond. Steve Eyler was the firemaster . He built a fire even Chief would have been proud of in the outside fire pit. I also heard gunshots that may have been connected with he and Grace ? Gary and Jenny checked out the trails and Gary is going to build a map of the trails and get it set up for a future orienteering outing for the bayou chapter there after it cools off and the leaves fall.

As is always the case old outings were remembered and future ones are being planed when this group gets together. I LOVE this group of people. There is no other bunch quite like it . Thanks again and hats off to Sandy and Kenny for all their work and making this event happen.



L&A Trail www.louisianatrails.org

By: Cathy Joyce

At the March meeting, Ted Riser talked about progress on the L&A Trail. He started with some history on the L & A Railroad from Sibley, LA, to Winnfield, LA.

The Rail Banking Act of 1983 allows railroads to announce they are closing a railroad, but they have to leave the bridges, tunnels and culverts in place.

In 2001, the 65 mile corridor of L&A Rails was purchased for \$100,000 to be developed into a multi-recreational trail. It runs through four parishes - Webster, Bienville, Natchitoches and Winn, and through a large part of the Kisatchie National Forest. It crosses over two large streams: Black Lake Creek and Saline Creek.

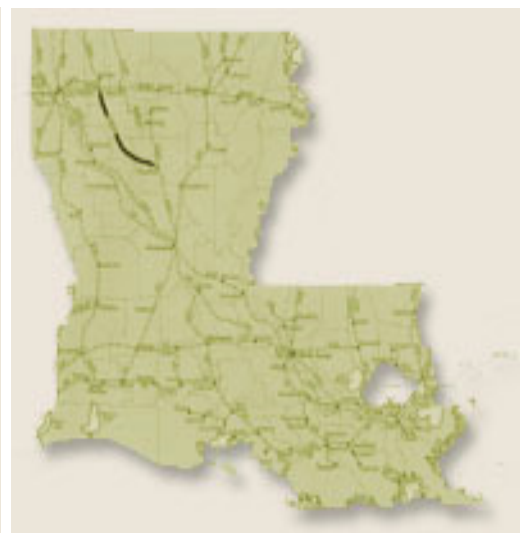
Stores have reopened in many small towns, and trucks belonging to those using the trail are there every weekend. Every road that crosses the trail is an access point. The main ones are in Heflin, Jamestown, Castor and Chestnut.

95% of support for this trail is from 4-wheelers and motorcyclists. Louisiana Trails membership is \$25/year per person. You need to be a member to use the trail.

Louisiana Trails is working on a \$91,000 grant to build an equipment house/yard in Goldonna. They need \$23,000 "in kind" match to help secure this grant. "In kind" is volunteer time, calculated at \$19.33/hour.

Ted had volunteer sheets for those wanting to help out, plus membership forms. If we put in volunteer time, we'll be given membership for the year! If we're interested in volunteering, contact Ted, and he'll direct us to where we are needed.

You can call [318-727-8860](tel:318-727-8860) or [318-576-3274](tel:318-576-3274) or [318-727-9376](tel:318-727-9376), or write: Louisiana Trails, PO Box 176, Goldonna, LA 71031.



Rail-Trail Project Rises from the ashes in Northwest Louisiana

By: Bill Robertson

This is a developing success story for outdoor enthusiasts and for the people of Northwest Louisiana. It's a place for outings. And it's also a lesson for the Ozark Society.

The subject is the L&A Trail, a 65-mile-long former railroad corridor being developed into a recreational trail. Ted Riser of Sibley, vice president of Louisiana Trails Inc., the nonprofit organization developing the trail, was guest speaker at the BCOS April meeting.

The trail was originally a railroad built by the Louisiana & Arkansas Railroad in the late 1800s. It went from Hope, Arkansas, to Winnfield, Louisiana. The rail line was abandoned by the 1930s successor to L&A, KCS Railway Co., in the mid-1990s and offered to the State of Louisiana as a linear "Rail to Trail" state park under terms of the National Trails System Act.

Well-intentioned plans for the park were undermined by protests from a few upset landowners who had been terrorized by fear-mongering provocateurs spreading stories of criminals and drug addicts using the trail for unseemly activities. Goldonna native John Tarver and his brother jumped into the breach and purchased the corridor from KCS in 1996.

Tarver, a retired LSU history teacher, and his brother formed Louisiana Trails Inc. to purchase and develop the park. When the State backed out of the project in the face of noisy opposition and bad press, the Tarvers stepped in and negotiated the corridor purchase from KCS.

Rail-to-Trail projects are all over the United States. As Riser said, Congress passed the National Trail Systems Act to address the abandonment of thousands of miles of rail corridor and the tragic lost opportunities that represents for the nation.

"From 1930 to 1975 some 38,000 miles of track was abandoned and went back to landowners," Riser said. "From 1975 to 1990 the figure was 65,000 miles."

The act specifies that nonprofit organizations, states and local governments can purchase abandoned rail corridors and put them into recreational use. The hitch is that trail-developers must agree to sell the corridors back to railroads if a viable plan to put them back into train use emerges.

The Tarvers have built an organization to support the L&A Trail. They have recruited leaders like Ted Riser to help. They have overcome lawsuits by landowners wishing to claim small sections of land and destroy the trail by chopping it into a thousand pieces.

And they have inspired more than 2,000 individuals to become \$25/year members of the Louisiana Trails support group (go to www.louisianatrails.org) to provide maintenance and improvements to the park. The money from the memberships goes into trail maintenance.

The L&A Trail is a 100-foot-wide, 65-mile-long path. It is private property open to members and to those who wish to be members and support the project. Groups that want to do trail cleanup can get a free year-long membership for organizing a cleanup day for trash pickup and brush clearing.

Riser says the vast majority of the members to date are four-wheel enthusiasts. But the trail is open for pedestrian use, horseback-riding, bicycling, trail-riding and four-wheeling.

So far the organization has obtained funding and support sufficient to install decking on 22 trestles and build pavilions at Goldonna, Jamestown, Castor and Heflin, with plans for another at Sibley.

Rail-Trail Project Rises from the ashes in Northwest Louisiana cont'd.

Improvements to 600-foot-long trestles at Goldonna and Black Lake are pending.

Future plans also include hard-surfacing a part of the trail at Goldonna for bicyclists and handi-capped users.

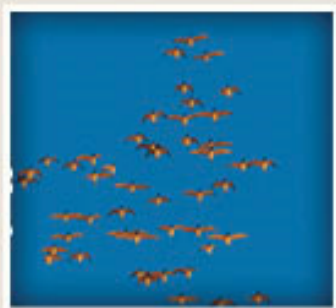
Long-term plans are to turn the project over to the State to fulfill the original goal of a linear state park.

Long-time BCOS members may remember that then-State Senator Foster Campbell, whose district included Webster and Bienville parishes, championed the State Park plan in 1995. At the time he had support from the Office of State Parks, which had developed a \$3-million improvement plan to create what would eventually be one of the longest Rail-to-Trail projects in the country.

Campbell gave a talk to BCOS during his campaign for the park. He later abandoned the plan in the face of loud public protest and opposition from then-Gov. Mike Foster. Groups like BCOS failed to rally around it.

One of the things Campbell had said the park would do is stimulate business in the corridor, which is one of the least-developed and most rural areas of Louisiana. Thanks to L&A Trail users, Riser said, stores are reopening in places like Jamestown and Castor.

Let's plan an outing for trail maintenance on the new L&A Trail.



Athens Big Fork Trail

By: Roy O'Neil

If being able to really appreciate a roaring campfire is one of the things you like most about hanging out with friends in the outdoors, then if you were not in the group at Shady Lake Campground on March 1st – 3rd of this year you missed a golden opportunity.

Even though low temps were expected, no one thought it would drop to around 20 degrees on Friday night. Combine that with the winds that seemed to never cease blowing, and ones appreciation of the fire increased tremendously.

Normally I might simply give the number of hardy Ozarkers who showed up, but this was not what I would describe as “normal”. With that in mind, please bear with me as I share the names of our intrepid crew. By the way, there were 19 people involved, so if the list is short, I apologize. Here goes –

Everett Rambin, Jack Land, Tom Thompson, Brady Thompson, Richard Maxwell, Harvey Kennedy, Mark Lane, Barbie Halbert, Terry Harlon, Sandy Roerig, Laura Touchstone, Neal Havard, Stephanie Parks, Charlie Henington, Angie Henington, Abigail Henington, Blair Buckley, Dana Buckley, and Roy O'Neal.

The group was separated into three work crews Saturday morning and hit the trail about 9 A.M. Two crews worked on the middle section of the trail, with one crew starting from each end of the section, working toward each other and meeting somewhere along the trail. Vehicle keys were exchanged and each crew basically continued along the trail, catching any small repair need that the other crew may have missed. Funny thing about this method. I have been doing this for quite a few years now, and have yet to find a crew who did not find many deficiencies in the other crews work. As you who have not yet participated may have guessed, this is all part of the fun. Richard Maxwell and Everett Rambin sort of volunteered to do the short upper section after it having been described by this writer as just a little bit of uphill, but probably very grown over by briars, etc. due to the openness of the trail and its lack of attention in the past couple of years. Richard Maxwell, upon the and Everett's return to camp, told me that this was the second time I had lied to him about the trail work. He said that the first time I told him it was just a nice walk in the hills, and this time that the trail would be heavily covered with briars, etc. Turned out that the upper section had apparently been manicured in order to accommodate the A-BF Marathon, of which I had no prior knowledge.

Sorry about that, Richard. I will try to be more truthful next year. Thanks for literally “hanging out” with us.

The pot luck feast we had Saturday night after the work day, was as usual, fit for a king. Okay, I am not exactly what that really means. Suffice it to say that the food was “MMMM Good!”. (Eat your heart out Campbell's soup.)

Thanks so much for everyone's super efforts. Special thanks to Jack Land for his excellent marking of the spots needing more attention. He is definitely the GPS man. Also thanks to Mark Lane for coming all the way for Longview.

There is still plenty of work to do on the lower section so if you are looking for a good reason to do a little slow hiking, just let me know.

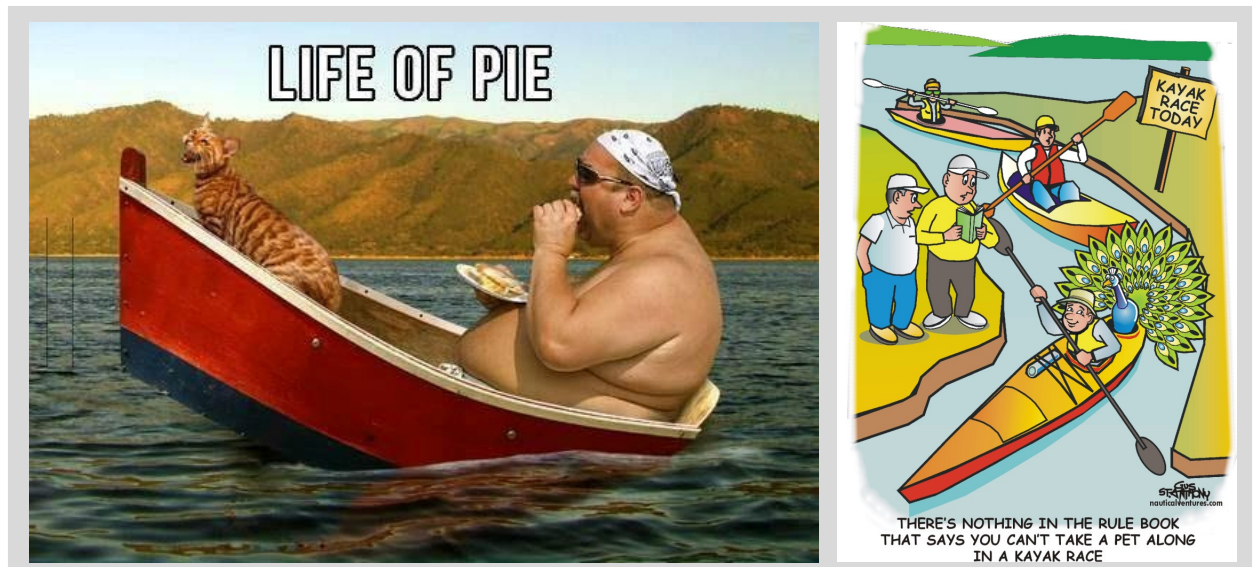
Richard, I really do mean “slow”.

Extreme Photo of the Month



Climbing Redwoods

Image by MICHAEL NICHOLS/National Geographic Stock





Juvenile Bald Eagle - Photo by Ronnie Basham



Congratulations to one of Shreveport's new businesses, Gearhead Outfitters. Headquartered in Jonesboro, AR, they are our first business member of the Bayou Chapter. Business members are featured in our newsletter and on our website. Nancy Larned, BCOS Membership Chairman and Facebook Administrator is the manager at the new location at Mall St. Vincent. They sell a full line of outdoor adventure clothing, shoes and gear. General Manager, Heath Gammill has told us that they will soon also have paddleboards available for demonstrations.

Go to <http://www.gearheadoutfitters.com> to view their website or call 318-751-9196 and ask for Nancy.

“Like” us on Facebook! www.facebook.com/bayouozark

Check out our website www.bayouozark.com!

Tell your friends about our new site! Email them, post it on Facebook and spread the word!

See all the Ozark Society Chapter newsletters and the Pack and Paddle newsletter at www.ozarksociety.net.

Classifieds

This area is reserved for classified ads to buy or sell by BCOS members. If you have any items for sale you think Ozark Society members might be interested in buying please contact Kalli Bailey.
Email: kallikennedy4@gmail.com

Bayou Chapter Shirts - \$12.50

1 youth medium, 2 large, 1 XXL

Contact Jenny Hackman jandgman@bellsouth.net

Canoe and Kayak Rental available to BCOS members only!

Kayak rental fee: \$ Kayak \$25.00, Canoe \$45.00,

PFD (life jacket) rental fee: \$15.00

Paddle rental fee: \$15.00

Must be a BCOS member and complete rental agreement. One week notice required.

Call Adam Willard at 318-423-1690 or Email: ashleysbuilding@suddenlink.net

Dagger Impulse

Excellent whitewater solo boat. Needs one airbag, a minor repair, and a little Simple Green.

Contact Perry Hill at 318-742-9992.

7 year old canoe - \$850.00

It is a Legend, Dagger, material is Royalex. It is in great shape as it has hardly been used. I have always keep it under roof and out of the sun. The few times that I used it, afterwards, it was washed and a coat of "Armor All" was applied. It does have a few scrapes but nothing that would hurt the performance. All the webbing on seats are in tack and solid. Wood has all the varnish and solid. It should last some one for years to come. Contact Craig Watson at 422-3912



Lot at Pendleton Harbor Subdivision on Toledo Bend

Texas side of the Pendleton Bridge. Asking \$3500. Contact Ann or Tuvan Sanli 318-929-2056.

Throw rope. \$25

Cycling clothing for women: Size Medium Tops \$5

One Piece woman's wet suit, Zips up the back \$20

Portable Toilet for camping \$10. (Never been used.)

Contact Toni Spitale at 318-218-5716 (Cell) or 318-869-1015 (Home)

Bayou Chapter Officers

Chairman

Harvey Kennedy
318-617-7940

harvlee@bellsouth.net

Vice-Chairman

Bill Robertson
318-861-1932

wgrobertson@gmail.com

Secretary

Lisa Iadarola
318-773-9404

lisaiadarola@yahoo.com

Treasurer

Sharol Davenport
Cell: 318-834-0480

sdavenport@entcenter.md

Canoe Clinic

Adam Willard
Cell: 318-423-1690

ashleysbuilding@suddenlink.net

Conservation Reports

Dick Maxwell
Cell: 318-635-7147

Rmax62@comcast.net

Newsletter Photographer

Ken Harris
318-868-9765

Kd_harris@comcast.net

Membership Chairman & Facebook Administrator

Nancy Larned
678-978-4805

njlarned@yahoo.com

Newsletter Designer/Webmaster

Kalli Kennedy Bailey
318-470-3740

kallikennedy4@gmail.com

Publicity Advisor

Crystal Whitman
318-426-3998

tiggerc@aol.com

BCOS Yahoo Groups Moderator

Brenda Almand Miller
318-227-3706

brendagstephens@yahoo.com

Local streams paddling coordinator

Jack Land
318-423-1026

jland1@bellsouth.net

Local hiking coordinator

John and Cathy Joyce
318-221-4441

johncathyjoyce@bellsouth.net

White water paddling coordinator

Brian Adams
Cell: 318-469-5214

brian-adams@earthlink.net

Conservation Activities Coordinator

Roy O'Neal
Cell: 318-272-0259

roneal2@bellsouth.net

Ozark Society Officers

Ozark Board Members

Roy O' Neal
Cell: 318-272-0259

roneal2@bellsouth.net

Catherine Tolson
318-343-7482

catherine.tolson@comcast.net

Ozark Membership Chairman

Jenny Hackman
318-288-9096

jandgman@bellsouth.net

Ozark Society Secretary

Sandy Roerig
318-675-7877

sroeri@lsuhsc.edu

See all the Ozark Society Chapter newsletters and the Pack and Paddle newsletter at www.ozarksociety.net.

“Like” us on facebook!

facebook.com/bayouozark

Visit our website at:

www.bayouozark.com

The Bayou Chapter of the Ozark Society
P. O. Box 4693
Shreveport, LA 71134-0693



